

THE LINE SHOWN ABOVE IS
BASED ON THE FOLLOWING ASSUMPTIONS:
1. THE LINE SHOWN ABOVE IS
BASED ON THE FOLLOWING ASSUMPTIONS:
2. THE LINE SHOWN ABOVE IS
BASED ON THE FOLLOWING ASSUMPTIONS:

E

D

C

B

A

12/22/2020 1:12:38 PM

A1
A-122B RCP- PARTIAL- LEVEL 2 - AREA B

1

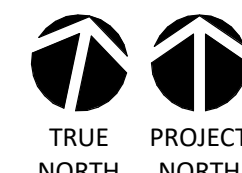
2

3

4

5

6



1/8" = 1'-0"

RCP LEGEND

1/8" = 1'-0"

RCP SHEET NOTES

- SEE SHEET A001 FOR PARTITION TYPES AND TERMINATION ABOVE CEILING
- SEE FINISH SCHEDULE FOR CEILING TYPES & MATERIALS IN EACH ROOM / AREA
- DIMENSIONS ARE TO FACE OF STUD, TYPICAL
- ALL CEILINGS TO BE 8'-6" AFF, U.N.O. CEILING HEIGHTS SHOWN ON THE REFLECTED CEILING PLANS ARE NON-TYPICAL AND SPECIFIC TO THE AREA INDICATED. REFER TO INTERIOR ELEVATIONS FOR THE HEIGHTS OF SOFFITS ABOVE CASEWORK
- CEILING GRID/TILES TO BE CENTERED IN ALL ROOMS UNLESS NOTED OTHERWISE. PARTIAL TILES AT ROOM PERIMETERS SHALL NOT BE LESS THAN 6" IN EITHER DIMENSION
- SEE ELECTRICAL, FIRE ALARM AND FIRE PROTECTION DRAWINGS FOR SPECIAL SYSTEMS, SMOKE DETECTORS, LIGHTING AND WALL MOUNTED FIXTURES NOT SHOWN ON THIS SHEET. COORDINATE LOCATIONS OF ALL FIXTURES NOT INDICATED WITH LAYOUT INDICATED ON THIS SHEET
- LIGHT FIXTURES AND MECHANICAL DIFFUSERS ARE SHOWN FOR POSITIONING IN FINISH CEILING SYSTEM. COORDINATE WITH MECHANICAL AND ELECTRICAL DRAWINGS FOR FIXTURE TYPES, MECHANICAL DIFFUSERS, WALL MOUNTED FIXTURES AND INSTALLATION OF FIXTURES IN SPACES WITHOUT CEILINGS. (LIGHTING AND HVAC DIFFUSERS ARE SHOWN FOR COORDINATION ONLY - SEE MECHANICAL AND ELECTRICAL DRAWINGS FOR SPECIFIC INFORMATION)
- SEE MECHANICAL FLOOR PLANS FOR EXTENT OF EXPOSED DUCTWORK IN EXPOSED STRUCTURE AREAS WITHOUT CEILINGS
- EXTEND PERIMETER WALLS AND FINISH TO STRUCTURE ABOVE AT EXPOSED STRUCTURE AREAS. PAINT ALL EXPOSED DUCTWORK, PIPING, HANGERS, ETC...
- SEE MECHANICAL AND ELECTRICAL DRAWINGS FOR MOUNTING LOCATIONS OF ITEMS WHERE NO CEILING IS INDICATED
- CENTER LIGHTS, DIFFUSERS, EXIT SIGNS SMOKE DETECTORS, SPEAKERS, GENERAL ALARM SPEAKERS/STROBES & MISC DEVICES IN CEILING TILES WHERE THEY ARE LOCATED. ALIGN MULTIPLE ITEM CENTER OR EDGES
- LOCATE MECHANICAL GRILLES AND DIFFUSERS SHOWN IN CORNERS OR NEAR WALL TO 12" OFF WALLS, UNO.
- INSTALL ACCESS PANELS IN GYPSUM BOARD CEILINGS AT DUCT DAMPER CONTROLS, DUCT MOUNTED SMOKE DETECTORS, MANUAL DUCT CONTROLS, ETC.
- ALL SINGLE LIGHT FIXTURES SHALL BE CENTERED IN THE CEILING WITHIN WHICH THEY OCCUR
- LIGHTS LOCATED IN STAIRS SHALL OCCUR AT EACH FLOOR AND INTERMEDIATE LANDINGS
- LOCATE SPRINKLER HEADS IN THE CENTER ZONE OF THE CEILING TILE. ALIGN CORRIDOR SPRINKLER HEADS IN THE SAME LINE PARALLEL TO THE WALL WITHIN EACH SPECIFIC CEILING CONSTRUCTION
- SPRINKLER HEADS, OTHER THAN CONCEALED, SHALL BE SEMI RECESSED (CENTER IN CEILING TILE)
- ALL GWB CEILINGS TO RECEIVE CONCEALED SPRINKLER HEADS
- WHERE ACT CEILINGS OVERLAP, LOWER CEILING SHALL OVERLAP BY ATLEAST 8 INCHES. LOWER ACT CEILING TO RECEIVE 6" KNIFE EDGE AROUND THE PERIMETER U.N.O.
- SOUND ATTENUATE BATT ABOVE CEILING IN ALL OFFICES, CONFERENCE ROOMS, TRAINING ROOMS & EOC, ENTIRE CEILING.

LEGEND- REFLECTED CEILING PLAN

	ACT-1 24"x24" LAY-IN ACOUSTIC CEILING TILE		2 X 2 LED RECESSED TROFFER
	ACT-2 24"x48" LAY-IN ACOUSTIC CEILING TILE		2 X 4 LED RECESSED TROFFER
	ACT-3 48"x96" LAY-IN ACOUSTIC CEILING W/ INTEGRATED LIGHTING AND HVAC		4" SQUARE RECESSED LED LIGHTS
	ACT-4 48"x96" LAY-IN ACOUSTIC CEILING W/ INTEGRATED LIGHTING AND HVAC		RECESSED LED STRIP LIGHT, LENGTH VARIES
	ACT-5 48"x96" LAY-IN ACOUSTIC CEILING W/ INTEGRATED LIGHTING AND HVAC		DECORATIVE PENDANT
	3'-0"x3'-0" PIPE GRID SYSTEM STRUCTURE ABOVE EXPOSED & PNT BLACK		CONTINUOUS LINEAR SUSPENSION INDIRECT/ DIRECT LED, LENGTH VARIES
	WPP-1 WOOD SOFFIT		1'x4' LED SUSPENDED LINEAR UTILITY FIXTURE
	GYPSUM BOARD		LED PENDANT, MULTI HEIGHT/ SHAPE/ DIAMETER, TBD
	EXPOSED STRUCTURE - NO CEILING		WAC LIGHTING WALL SCONCE, EXACT FIXTURE TBD
	EXPOSED STRUCTURE - DRYFALL PAINTED ABOVE		RETURN AIR DIFFUSER
			EXHAUST FAN
			SUPPLY AIR DIFFUSER
			LINEAR AIR DIFFUSER
			HEIGHT ABOVE FINISHES FLOOR 9'-0" U.N.O.
			LIGHT COVE



CAPE FEAR FD STONEWATER



101 NORTH THIRD STREET, SUITE 500
WILMINGTON, NORTH CAROLINA 28401
TEL. 910.790.9901 FAX. 910.790.3111
WWW.LS3P.COM



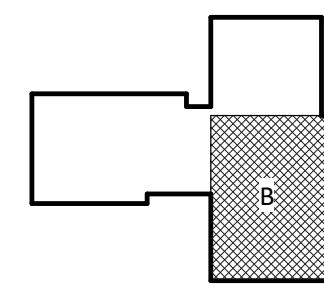
NOT FOR
CONSTRUCTION

NHC Government Center 7702-190810

**NEW HANOVER COUNTY
GOVERNMENT CENTER**
GOVERNMENT CENTER DRIVE
WILMINGTON, NC 28403
LS3P PROJECT: 7702-190810

DATE	DESCRIPTION
A 2020.08.18	T1- SCHEMATIC DESIGN
B 2020.10.16	T1- DESIGN DEVELOPMENT
C 2020.11.20	T1- GMP SET
D 2020.12.16	GMP SET
E 2020.12.22	ADDENDUM #1

KEY PLAN:



SHEET NAME:
REFLECTED CEILING
PLAN- LEVEL 2 AREA
B

ORIG SUBMISSION: 2020.12.16

CURRENT: 2020.12.22

ADDENDUM #1

SHEET:

A-122B

GMP SET